

one4all

HIGHBAY SERIES



Proiettore per illuminazione di capannoni industriali, aziende con grandi spazi espositivi, centri commerciali.
Unico per design e tecnologia.
Utilizza delle esclusive ottiche da 60°, 90° e 120° in silicone, antiabbagliamento, resistenti ai raggi UV e garantite a vita sull'ingiallimento del LED.

Projector to light industrial warehouse, facilities with wide show-rooms areas, shopping centres.
Unique for its design and technological innovation. It is equipped with special 60°, 90° 120° silicone lenses, anti-glare, UV resistant and lifelong warranty against the LED yellowing.

one4all


Unik 60
60W
Unik 90
90W
Unik 110
110W
MECHANICAL FEATURES

Body	Die-cast aluminium	Die-cast aluminium	Die-cast aluminium
Cooling system	Passive Heat Sink system	Passive Heat Sink system	Passive Heat Sink system
Ip rate	IP65	IP65	IP65
Weight	6,5 kg	6,5 kg	6,5 kg

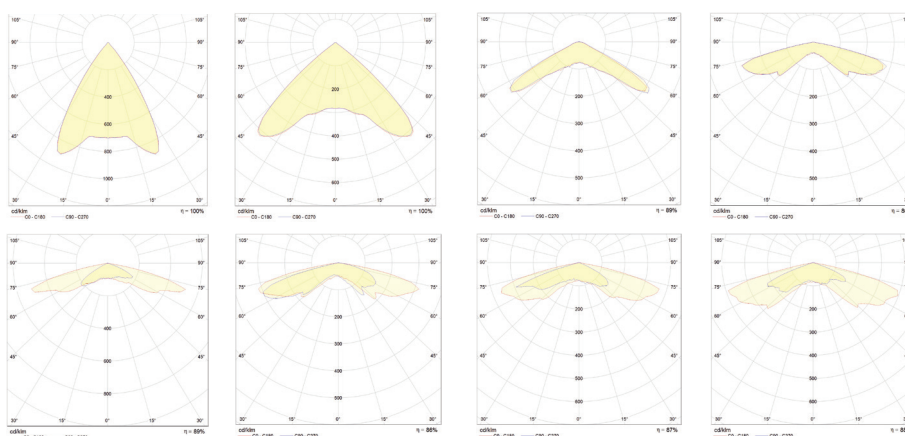
ELECTRICAL FEATURES

Input power	220-240 Vac with PFC	220-240 Vac with PFC	220-240 Vac with PFC
PFC	Active > 90	Active > 90	Active > 90
Nominal power absorption	64W	94W	112W
Dimming	1-10V (selv) - DALI	1-10V (selv) - DALI	1-10V (selv) - DALI
Power supply with stand-by function and permanent memo ry			

LIGHTING FEATURES

Source	COB LED	COB LED	COB LED
LED type	CITIZEN	CITIZEN	CITIZEN
LED Lumen efficiency	141lm/W	142lm/W	130lm/W
Colour temperature	5000K or (3000K / 4000K)	5000K or (3000K / 4000K)	5000K or (3000K / 4000K)
Luminous flux	9076lm	13384lm	14557lm
CRI	70 / 80 Standard	70 / 80 Standard	70 / 80 Standard
Silicone lens	60° / 90° / Square 120° / 155° Asym.1 / Asym.2 / Asym.3 / Asym.4	60° / 90° / Square 120° / 155° Asym.1 / Asym.2 / Asym.3 / Asym.4	60° / 90° / Square 120° / 155° Asym.1 / Asym.2 / Asym.3 / Asym.4

Anti-vandal protection optic IK10,
 UV Resistant, anti- glare,
 no yellowing effect


AVAILABLE VERSIONS


Hanging Hook

Fixing Bracket

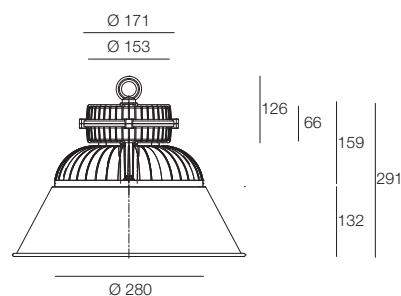
 Hanging Hook
 with Front Bell

Downlight Recessed

Architectural

UPON REQUEST

CRI >90
 BLUE COB LED
 AMBER COB LED
 Front Bell


DIMENSIONS




Unik 60
60W

Unik 90
90W

Unik 110
110W

CARATTERISTICHE MECCANICHE

Corpo	Alluminio pressofuso	Alluminio pressofuso	Alluminio pressofuso
Sistema di raffreddamento	Sistema passivo - Heat Sink	Sistema passivo - Heat Sink	Sistema passivo - Heat Sink
Ip rate	IP65	IP65	IP65
Peso	6,5 kg	6,5 kg	6,5 kg

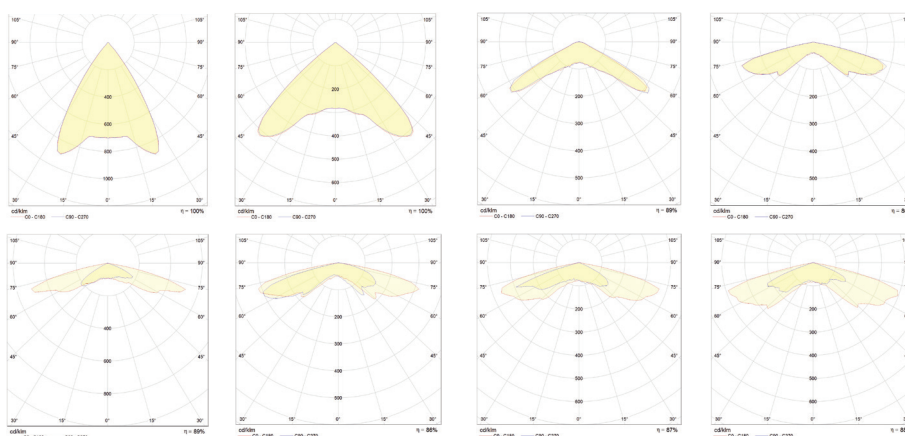
CARATTERISTICHE ELETTRICHE

Alimentazione	220-240 Vac con PFC	220-240 Vac con PFC	220-240 Vac con PFC
PFC	Attivo > 90	Attivo > 90	Attivo > 90
Potenza nominale assorbita	64W	94W	112W
Dimmerazione	1-10V (selv) - DALI	1-10V (selv) - DALI	1-10V (selv) - DALI
Alimentatore con funzione stand-by e memoria permanente			

CARATTERISTICHE ILLUMINOTECNICHE

Sorgente	COB LED	COB LED	COB LED
Tipologia LED	CITIZEN	CITIZEN	CITIZEN
Efficienza luminosa LED	141lm/W	142lm/W	130lm/W
Temperatura colore	5000K or (3000K / 4000K)	5000K or (3000K / 4000K)	5000K or (3000K / 4000K)
Flusso luminoso	9076lm	13384lm	14557lm
CRI	70 / 80 Standard	70 / 80 Standard	70 / 80 Standard
Lenti al silicone	60° / 90° / Square 120° / 155° Asym.1 / Asym.2 / Asym.3 / Asym.4	60° / 90° / Square 120° / 155° Asym.1 / Asym.2 / Asym.3 / Asym.4	60° / 90° / Square 120° / 155° Asym.1 / Asym.2 / Asym.3 / Asym.4

Protezione ottica antivandalo IK10, resistente ai raggi UV, antiriflesso, effetto anti ingiallimento.



VERSIONI DISPONIBILI



Gancio

Staffa

Gancio con
rivestimento a campana

Da incasso

Architettonica

SU RICHIESTA

- CRI >90
- BLUE COB LED
- AMBER COB LED
- Rivestimento a campana



DIMENSIONI

