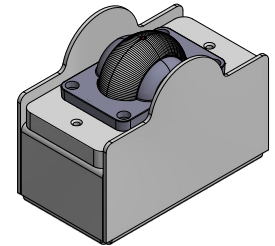
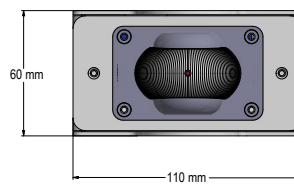
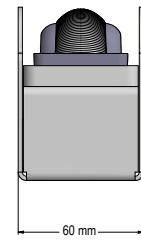
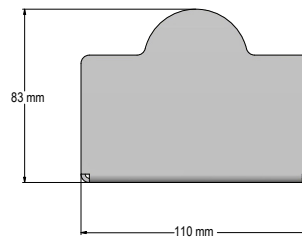


Dimensions



Mechanical features

BODY	Anodised Aluminum
COOLING SYSTEM	Natural Convection
IP RATE	IP67
WEIGHT	0,6 Kg

Electrical features

INPUT POWER	220-240Vac
PFC	> 0,65
NOMINAL POWER ABSORPTION	4,5 W

Lighting features

SOURCE	n°4 Cree LED
LUMINOUS FLUX	450 lm (3000°K - Ta 30°C)
LED LUMEN EFFICIENCY	100 lm/W (3000°K - Ta 30°C)
COLOUR TEMPERATURE	3000°K / 4000°K / 5000°K
COLOUR	Amber / Red / Blue / Green

