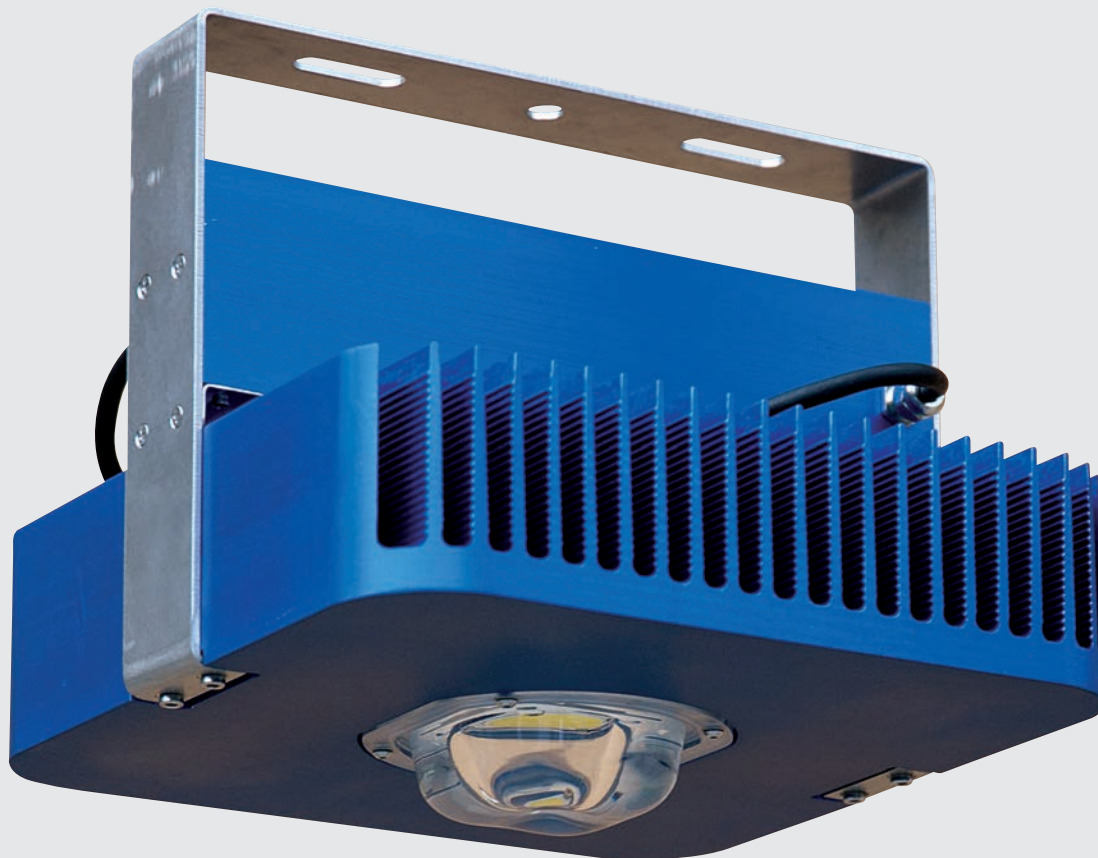


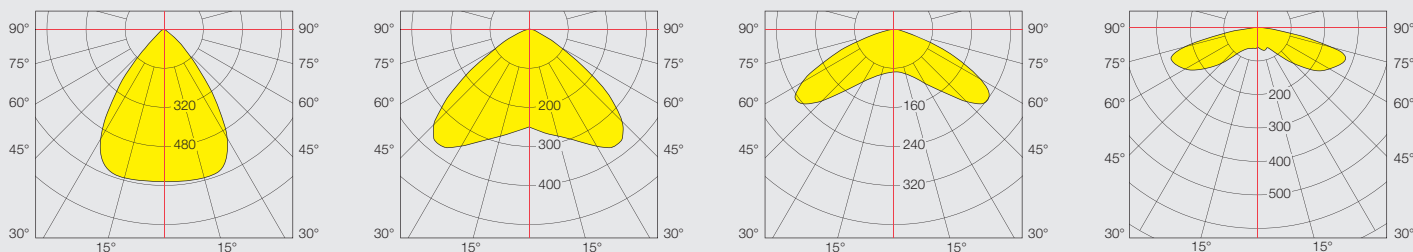
POOL



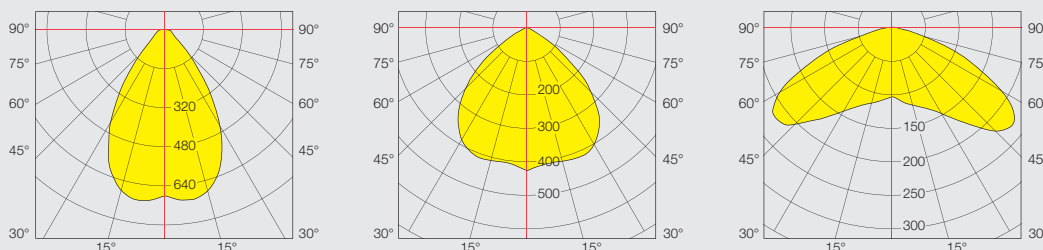
Questo proiettore è stato progettato per lavorare in ambienti ostili, dannosi per qualsiasi metallo. Lo speciale trattamento anti-corrosivo a cui è sottoposto lo preserva nel tempo ed è garantito dieci anni da qualsiasi tipo di corrosione. Utilizza delle esclusive ottiche da 60°, 90°, 120°, 155° (solo per Pool 130) in silicone, antiabbagliamento, resistenti ai raggi UV e garantite a vita UL 94.

This fixture was designed to work in hostile environments to metals. The special anti-corrosive treatment ensures its long lasting and it is guaranteed 10 years from any type of corrosion. It is equipped with special 60°, 90° 120°, 155° (only for Pool 130) silicone lenses, anti-glare, UV resistant and lifelong warranty against the yellowing effect UL 94.

Pool 130

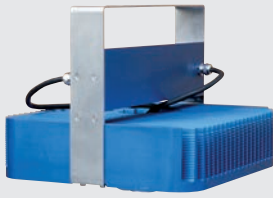


Pool 160



Antivandalo IK10
Garanzia a vita UL 94
Resistente ai raggi UV
Antiabbagliamento

Anti-vandal protection optic IK10,
UV Resistant, anti-glare,
no yellowing effect UL 94



Pool 130 / 160

130W / 160W

CARATTERISTICHE MECCANICHE

Corpo	Alluminio Estruso con Trattamento Speciali AntiCorrosivo
Raffreddamento	Convezione Naturale
Grado di protezione	IP65
Peso	11 kg

MECHANICAL FEATURES

Body	Extruded aluminium with special anti-corrosive treatment
Cooling system	Passive Heat Sink system
IP rate	IP65
Peso / Weight	11 kg

CARATTERISTICHE ELETTRICHE

Alimentazione	100-240Vac con PFC
PFC	Attivo > 90
Potenza Nominale Assorbita	130W (mod. Pool 130) 164W (mod. Pool 160)

ELECTRICAL FEATURES

Input power	100-240Vac with PFC
PFC	Active > 90
Nominal power absorption	130W (mod. Pool 130) 164W (mod. Pool 160)

CARATTERISTICHE ILLUMINOTECNICHE

Sorgente	1 COB LED
Tipo di LED	CITIZEN
Efficienza della Sorgente	135 lm/W (mod. Pool 130) 140 lm/W (mod. Pool 160)
Temperatura colore	3000K / 4000K / 5000K
Flusso luminoso della sorgente	17208lm (mod. Pool 130) 23020lm (mod. Pool 160)
CRI	70 / 80 Standard
Tipo di ottica	60° / 90° / Square 120° / 155° (mod. Pool 130) (Lente in silicone) 60° / 90° / Square 120° (mod. Pool 160) (Lente in silicone)

LIGHTING FEATURES

Source	1 COB LED
LED type	CITIZEN
LED Lumen efficiency	135 lm/W (mod. Pool 130) 140 lm/W (mod. Pool 160)
Colour temperature	3000K / 4000K / 5000K
Luminous flux	17208lm (mod. Pool 130) 23020lm (mod. Pool 160)
CRI	70 / 80 Standard
Lens type	60° / 90° / Square 120° / 155° (mod. Pool 130) (Silicone lens) 60° / 90° / Square 120° (mod. Pool 160) (Silicone lens)

SU RICHIESTA UPON REQUEST

Funzione DIMMING
DIMMING function

CRI >90

Temperatura colore 2700K o 3500K
Colour temperature 2700K or 3500K

DIMENSIONI DIMENSIONS

